

# LAKE DELHI VOICE

Monthly Newsletter of the Lake Delhi Taxing District and Community—October, 2013

## In This Issue:

- Message from the Trustees
- Lake Delhi Feature Family Story
- Good Neighbor Award winner
- *Where In The World Is It?* Contest and the answer from last month
- Lake Bed Preparation Information
- Reconstruction Estimated Timeline
- Septic System Information
- Crazy Photo of the Month, *and much more*

## *Message From the Lake District Trustees*

### **Dear Lake Delhi Property Owners and Supporters:**

The Trustees have been very busy on a number of fronts to keep the progress of Dam and Lake reconstruction moving forward as quickly as possible. Some of the areas and updates are below:

**Permitting:** The Federal Permitting process is moving, but with the Federal Government shutdown taking place — our timeline of getting our federal permit is being delayed. The Army Corp of Engineers has provided all of the approval parties a copy of what is called a Programmatic Agreement for review before the Federal permit can be issued. With the Federal Government shutdown, it will have some impact on a few of the groups engaged in the federal permitting process. The Army Corp. of Engineers, the Federal Advisory Council, and even the State of Iowa Historical group (SHPO) rely on Federal funding and have all been impacted by the shutdown situation. We will keep everyone informed of the progress as things evolve, but for now, we are expecting some delay for our federal permit. How long is anyone's guess but let's hope that it is only a short delay.

The permit application required for Phase 2 of our project has been sent to the DNR for their review and our Construction committee and Engineering team will continue to answer any questions that the DNR may have as they move through that review process.

### **Historical Documentation aspects of the reconstruction:**

The Lake Delhi Taxing district is required to hire a qualified firm to fully document the historical significance of the Dam and other areas of interest. Last week, we had a firm that helped us with the Archeological work out at the Dam site starting that process which includes taking many photographs of

the current structure as it now stands before any construction work takes place. Additionally, this historical documentation process includes finding old photos of the dam powerhouse. We would appreciate your assistance in providing/loaning any old photos you might have of the Dam for this process. We are needing old photos of the powerhouse itself from any angle. These can be from newspapers, copies of photos, etc... Just send us an email to

[LakeDelhiTrustees@LakeDelhi.org](mailto:LakeDelhiTrustees@LakeDelhi.org) if you have any old images you might be willing to loan or allow us to scan to assist with the documentation process.

**FEMA/Homeland Security:** Our meetings and discussions continue to take place to work through the 2008 Events and projects. This past week we spent time in Des Moines working through the plan of attack on this and we know we have much work to do. We will keep you informed as more progress takes place.

**Construction:** The District Trustees have reviewed the bid package and approved it to move forward when the timing is right. Given our delay of federal permits, we will be waiting to let bids when we have a more firm timeframe of the federal permit being granted. In the meantime, there is a great deal of planning and additional work that the Construction committee continues to work on.

**Transfer of Property from LDRA to the District:** This week we closed on the property that is being transferred from the LDRA to the District. It is now in the process of working its way to the County Courthouse to record. Thank you to all that helped participate in this process.

Things are rolling, but obviously there are many tasks and projects that need to be completed.

### **Areas that we need your help are:**

1) Lake Bed Clean up and Tree removal. Please take care of any trees growing on your lake bed property and help your neighbors do the same. Please see the Lake Bed Preparation article later in this newsletter that speaks to **volunteer opportunities to help.**

2) Pictures of the Dam site: If you have older photos of the dam powerhouse, please email us at:

[LakeDelhiTrustees@LakeDelhi.org](mailto:LakeDelhiTrustees@LakeDelhi.org)

# LAKE DELHI VOICE

Monthly Newsletter of the Lake Delhi Taxing District and Community—October, 2013 Page 2

## *The Combined Lake Delhi Recreational Facility and Water Quality District Trustee's:*

Steve Leonard: President, Trustee

Larry Burger: VP, Trustee

Mary Kray: Secretary, Trustee

Laurie Kramer: Treasurer, Trustee

Bruce Schneider: Trustee

Lamont Davidson: Trustee

Todd Gifford: Trustee

Contact us:

Website: [www.LakeDelhi.org](http://www.LakeDelhi.org)

Email: [LakeDelhiTrustees@LakeDelhi.org](mailto:LakeDelhiTrustees@LakeDelhi.org)

Lake Delhi VOICE Editor: Todd Gifford



## Lake Delhi Feature Family Story

### "The Garvin's"

by Wayne & Jenny Garvin:

We started coming to Lake Delhi in the early 1960's with a friend who had built a hydroplane and wanted to try it out. We had great fun at Freddy's Beach. Wayne's sister and



brother-in-law (Karen and Don Williams) have lived here for many years. We would visit them on our vacations when we lived in Arizona.

We moved here in 1996 after retiring. Wayne said if we were ever going to move back to Iowa, now was the time. I said fine, but I wanted a house with a deck overlooking the water (tired of desert ya know). We travelled extensively looking at other lake areas but none compared to Lake Delhi. And we do have a house with a deck overlooking the water!

Great memories include learning to water ski behind Don Williams' boat; celebrating our 25th wedding anniversary at the Williams'; helping at the annual fishing contest and testing water with the Water Quality Team. We'll never forget move-in day. It was so icy (December 3rd) we had to have R.W. McDowell spread sand on our driveway to keep from breaking our necks! Family and friends helping all warmed up with a batch of Wayne's hot chili.



Jenny and Wayne with their grand son

Wayne's much older brother David and wife Bucket bought their lake home in 2007. Our son, Matt, daughter-in-law Marcia and grandson Dean bought their lake cabin in 2011. Having so much family enjoying the lake with us is priceless.

Lake Delhi means peace to us, the beauty of nature, yummy fish (when they bite), good neighbors and good lake friends and family. We tell people to come visit to see what a delightful slice of heaven is like



# LAKE DELHI VOICE

Monthly Newsletter of the Lake Delhi Taxing District and Community—October, 2013 Page 3

(especially when we have water). We even have a sign of an apple with a bite taken out that says "Eden".

Life is good. "If you're lucky enough to live on Lake Delhi, you're lucky enough!" Sadly, our 6-year-old grand son doesn't even remember pontooning on the lake. We need to get our water back!

## Good Neighbor Award

### *Jim Christensen and Family*

This past month, we had 2 nominations for the SAME person and family to receive the Good Neighbor Award! Congratulations to Jim Christensen and Family for a well deserved Good Neighbor Award.

*Submitted by Bob Galiher:*

*I would like to nominate Jim Christensen and his family for the Good Neighbor award. He has kept the growth of trees and weeds under control over much of the lake bed in the Claire View Acres area. He has done it for two years now and asks for nothing in return. That is not all he does. When it snows, he is out there with his plow opening up driveways etc for those that need help. I could go on and on. His son Joe has also been a great help and has beautified the road-side coming down to the Freddie's Beach area. His wife Shirley has sold countless cookbooks to help raise money for the dam rebuild. What great neighbors!*

*Ken and Barb DeKlotz would like to nominate the Jim Christensen family for the "family" Good Neighbor Award. They live at Clairview Acres and have had a place there for many years. Jim is a friend to everyone and has been mowing down the river frontage for about 10 families since the flood. He is always helpful if anyone has problems in the winter.*

*His wife, Shirley has been a big promoter for the "dam cook books" and has been supplying and selling, out of her home, almost 2000 books. Their son, Joe is responsible for beautifying the road coming down our hill with hostas and flowers.*

*Thank you, Christensen family, for being one of the "best neighbors" at Clairview Acres residents!*

As Good Neighbor Award winners, Jim and his family will receive Lake Delhi Shirts. Congratulations! Please send your nominations for your Good Neighbor Award recognition to [LakeDelhiTrustees@LakeDelhi.org](mailto:LakeDelhiTrustees@LakeDelhi.org).

## Where In The World Is It?

### CONTEST

Last Month Answer: Mt. Rushmore, and specifically Abe Lincoln's eye

Thank you to everyone who submitted their guesses, and **Congratulations to Joseph Camp**, who submitted the correct answer and was the lucky winner drawn from all the correct submissions. Joseph will receive a Lake Delhi shirt of his choice in his requested size.

**This Month, we have another Where in the World Is It** place to see if you can figure out where it is.



If you can successfully identify where this place in the photo is, submit your email answer to [LakeDelhiTrustees@LakeDelhi.org](mailto:LakeDelhiTrustees@LakeDelhi.org) by or before the end of the day October 16th, 2013, and then be the one lucky winner drawn from all the correct responses — you will win a Lake Delhi T-Shirt of your choice in style and size!!! Good Luck!!! Put "Where in the World Is It" in the Subject of your Email and put your answer in the body of the email along with your contact information.

## Lake Bed Preparation

As you know, we intend to begin Phase I construction on the power house soon. Work will continue through the winter and the plan is to then begin work on the spillway (Phase 2) in the spring 2014. With this plan and timeline, the coffer dam will be built in Spring 2014, which then when the water is diverted through the dam gates to dry the spillway area, will cause the river level at the dam to raise by approximately 20 feet. Lake

---

---

# LAKE DELHI VOICE

---

---

Monthly Newsletter of the Lake Delhi Taxing District and Community—October, 2013 Page 4

---

---

residents and property owners between the dam and approximately Hartwick Bridge will see water on their lake bed early Spring 2014. What this means from a timeline standpoint is that the lake bed needs to be prepared for lake water from just above Hartwick Bridge on down to the dam **this Fall** of 2013.

## **Trees are the primary focus issue**

The primary issue we need to address besides general debris removal (which we have collectively done a great job on and there are only a handful of debris areas that need to be cleaned up) is addressing the trees growing in the lake bed.

The Trustees and Lake Bed Preparation Committee have sought out expert opinion and information as well as gathered information from many local people that have experience dealing with tree and weed control. Based on all this information, we are providing a summary here and a general guide and plan of action.

## **If trees are submerged with more than 1 foot of water, they will not continue to grow**

According to Dr. Jesse A. Randall of the Iowa State University Forestry Extension office who we contacted for advice, whether we cut the trees down or not, when they are covered by more than 1 foot of water, they will no longer grow. Obviously we will want to cut the trees down that exist before we refill the lake so the dead trees will not pose a safety or recreational hazard when the lake pool is restored.

Because some or much of the lake bed may be covered in water next Spring from approximately Hartwick Bridge down to the dam, it is important that those lake bed trees and brush be cut down this fall. In the upper part of the lake, the same should happen during the summer of 2014 in preparation for lake refill in late fall.

According to the ISU Forestry Extension expert we contacted, there is no need to use poison on the cut trees/brush if water is going to submerge them more than 1 foot. However, if you are cutting trees in the lake bed long before they are submerged and you do not want them to grow (and especially when they are larger in size: 3 inches or greater in trunk diameter), then applying a chemical called Rodeo right after they are cut will kill the tree. Obviously this does not stop new trees starting.

The 2 primary trees that we have growing in the lake bed are Willows and Cotton woods, both relatively fast

growing trees. There are some others out there, but these two are by far the greatest in number. If you do choose to apply Rodeo, it is recommended that it be applied right after the tree is cut and done before the first hard frost. For more information, feel free to contact us at [LakeDelhiTrustees@lakedelhi.org](mailto:LakeDelhiTrustees@lakedelhi.org).

In general, we are relying on property owners to take proper measures to cut down the trees and brush on your lake bed your properties. However, there is local volunteer assistance being organized to assist this effort, especially in the areas that have the most tree/brush issues.

## **Lake Bed Tree/Brush Cutting Volunteer Events**

ATI Paladin in Delhi has graciously offered us the use of their equipment attachments for our lake bed preparation effort for as long as we need to use it. They have a wide variety of equipment that is perfect for our project, which is primarily efficiently cutting down the trees and heavy brush, as well as a variety of other clean up tasks. They will install these pieces of equipment on skid loaders/bobcats/tractors for us, train us how to use them, and allow us to use them until we are done. All we need to provide is the skid loaders/bobcats/tractors and volunteers.

We are now working to organize some lake bed preparation events from just above Hartwick Bridge down to the dam using volunteers and equipment soon before end of Fall.

## **Here is what we need from everyone:**

1. Anyone who is willing to volunteer their skid loader/bobcat/tractor as well as operate it using the ATI Paladin attachments, please contact Todd Gifford at 319-651-6688 as soon as possible.
2. Anyone who is willing to volunteer your time during a weekend day(s) to assist with the lake bed cleanup effort, please send an email with your contact information to [LakeDelhiTrustees@LakeDelhi.org](mailto:LakeDelhiTrustees@LakeDelhi.org), and use Subject of "Volunteer Lake Bed Event".
3. If you have property from just above Hartwick Bridge on down to the dam and you have *heavy tree/brush growth* that needs to be addressed, please call Todd Gifford at 319-651-6688 so we can log your area for the volunteer event



# LAKE DELHI VOICE

Monthly Newsletter of the Lake Delhi Taxing District and Community—October, 2013 Page 5

## Lake Delhi People Are Getting Things Done Out in the Lake Bed!

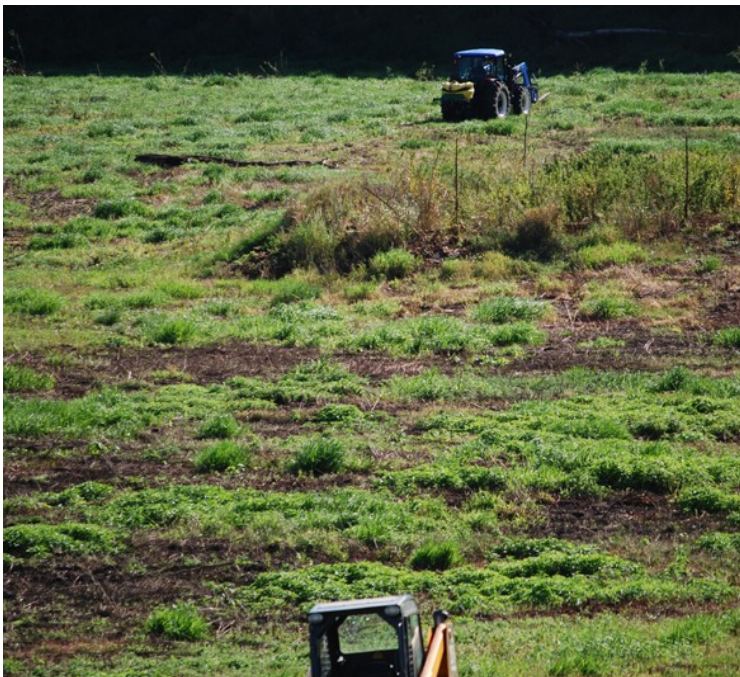
It is truly impressive and exciting to see people who are proactively maintaining the Lake Delhi lake bed and preparing for the lake to return.

Here are a couple of those people. If you have photos of people out taking care of the lake bed you would like to be recognized for their extra effort, please send them to us at [LakeDelhiTrustees@LakeDelhi.org](mailto:LakeDelhiTrustees@LakeDelhi.org).



Above: This is Pat Schmitz's rig out in the Lake Bed and doing some tree and brush maintenance.

Below: Adam Sheppard and his equipment in the lake bed taking care of business.



## Crazy Photo of the Month: *now that's a fish!*



## How to boost the flavor and health of fresh food

Everyone knows that fruits and vegetables are very nutritious, but the fact is that by taking a couple of simple steps you can actually boost both the flavor and the actual nutritional value of your fresh produce. A lot of people think that fresh fruit and vegetables are effectively dead once they have been harvested, but this is not in fact the case. They continue to respire even when stored in a refrigerator, absorbing oxygen and releasing carbon dioxide. This activity uses up their stores of sugars and antioxidants, which means they will have lost a bit of their natural sweetness and contain fewer antioxidants by the time you consume them. Some fruits and vegetables do this more quickly than others and should thus be eaten as soon as possible, such as artichokes, asparagus, brussels sprouts, corn, lettuce, okra, raspberries, snap beans, strawberries, arugula, broccoli, cherries, kale, mushrooms, parsley, scallions and spinach. If purchased from a local farmer or grown at home, soft vegetables and fruits like berries offer incomparable nutrition and flavor.



### **Mind Teaser Question:** (answer on page 6)

When Mama Leona boils pasta she adds three drops of oil and two drops of vinegar to the water. While at the market Mama accidentally dropped and broke the vinegar bottle. Undaunted, she instructed the shopkeeper to put both the oil and the vinegar in the same jar. How could Mama pour exactly three drops of oil and two drops of vinegar into the water using just the one bottle?

# LAKE DELHI VOICE

Monthly Newsletter of the Lake Delhi Taxing District and Community—October, 2013 Page 6

## *Cool Lake Delhi Shirts, Sweatshirts, Hats Available for Purchase*

The holidays are coming up, and Lake Delhi apparel is a great way for you to give a unique and appreciated gift to your family member, friend, or loved one. A large variety of Lake Delhi T-Shirts, Sweatshirts, Polo shirts for men and women, Fleece jackets, and hats are available for purchase in all sizes. All proceeds go to the Community Fund to Rebuild Lake Delhi. See the order form on the last page of the newsletter. Instructions are on the order form, as well as contact information if you have any questions. Wear or Gift Lake Delhi apparel for a great cause!

## Sudoku!

		5				1		7
				1	3	8		
	3	1						
6				7				2
			8		4			
1				3				9
						6	5	
		9	1	5				
8		4				3		

© 2013 KrazyDad.com

Fill in the blank squares so that each row, each column and each 3-by-3 block contain all of the digits 1 thru 9.

If you use logic you can solve the puzzle without guesswork.

## Great Quote

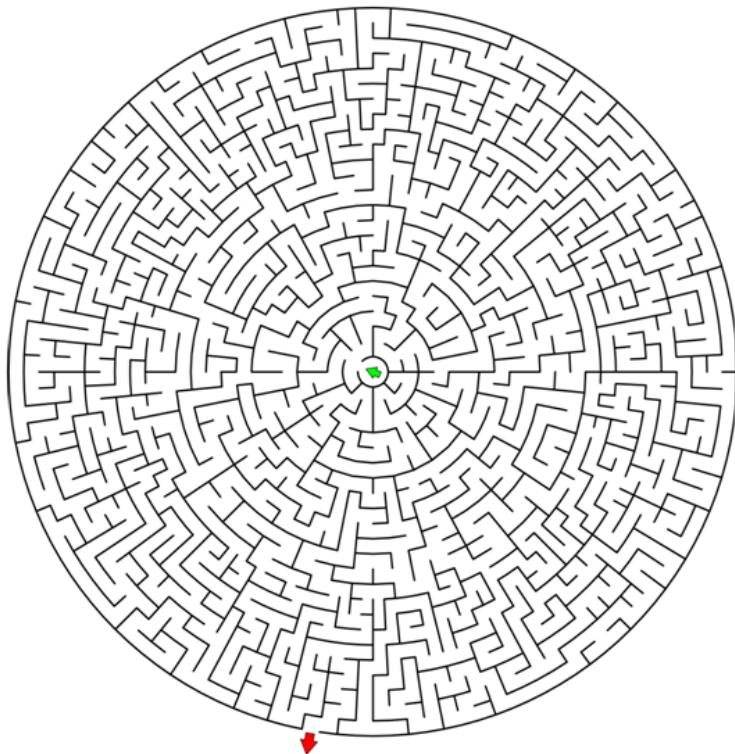
It would be possible to describe everything scientifically, but it would make no sense; it would be without meaning, as if you described a Beethoven symphony as a variation of wave pressure.

—Albert Einstein

## *Mind Teaser Answer from page 5:*

Since oil floats on top of vinegar, Mama removed three drops of oil from the surface, sealed the jar, and inverted it. When the oil rose to the top, she simply loosened the lid enough to allow two drops of vinegar to fall out.

## Find Your Way Out of This!



## October Happenings

**National Breast Cancer Awareness Month.** Public service organizations, professional medical associations, and government agencies work together to promote breast cancer awareness, share information, and provide greater access to services during the month of October and throughout the year.

**World Space Week, Oct. 4-10.** This United Nations effort explores and supports the peaceful uses of outer space and space-related sciences. The theme for 2013: "Exploring Mars, Discovering Earth."

**Earth Science Week, Oct. 13-19.** This year's theme, "Mapping Our World," engages young people and the public in learning how scientists, geographers, and other professionals use maps to represent land formations, natural resource deposits, bodies of water, fault lines, and more.

**Halloween, Oct. 31.** Trick or treat!



## Lake Delhi Rebuild Estimated Timeline of Key Tasks/Events

Timeline estimates are subject to change depending on Weather, Permitting, etc...

LDRA Property Transfer	Sept-Oct 2013
Federal Permit / County Permit	Nov 2013
Phase 1 Construction (powerhouse, gates, Electrical, Concrete repair)	Nov 2013 – Sept 2014
Phase 2 Permit (IDNR Project Permit)	Dec 2013
Phase 2 Construction Begins	Apr 2014
Coffer Dam Construction	Apr 2014
Divert water through Powerhouse (expected to raise lake level covering some amount of lake bed from about <u>Hartwick Bridge</u> on down to the dam)	May 2014
Phase 2 Construction (coffer dam, spillway)	Apr-Oct/Nov 2014
Lake Delhi fill with water	Oct/Nov 2014

### Lake Bed Preparation Tasks within timeline:

- Debris Removal
- Tree/Weed Mitigation
- Pre-water Dredging
- Shoreline work

# LAKE DELHI VOICE

Monthly Newsletter of the Lake Delhi Taxing District and Community—October, 2013 Page 8

## Septic System Information

Last week was National *SepticSmart Week*, so we wanted to pass along this educational information from the Delaware County Sanitarian to all Lake Delhi property owners. By taking small steps to care for and maintain home septic systems, homeowners not only help protect public health and the environment, you can also save money and enhance your property values. Do not hesitate to contact Dennis Lyons, our Delaware County Sanitarian, if you have any questions. He can be reached at 563-927-5925 or [dlyons@co.delaware.ia.us](mailto:dlyons@co.delaware.ia.us).



***Do Your Part, Be SepticSmart!***



- ❖ Approximately 25% of the U.S. households and 33% of new construction (both domestic and commercial) rely on onsite wastewater treatment (septic) systems.
- ❖ To help raise awareness about the need for proper care and maintenance of septic systems and to encourage homeowners to do their part, EPA is launching its *Inaugural SepticSmart Week, September 23-27*. By taking small steps to care for and maintain home septic systems, homeowners not only help protect public health and the environment, they can save money and protect property values.
- ❖ For more tips and more on SepticSmart Week, visit: [www.epa.gov/septic](http://www.epa.gov/septic)
- ❖ Or contact your Delaware County Sanitarian at (563-927-5925) or [dlyons@co.delaware.ia.us](mailto:dlyons@co.delaware.ia.us)

## Here are some Septic Do's and Don't's as Reminders:

### DO:

Have your system inspected at least every 3 years by a licensed contractor and have pumped every 3-5 years as needed.

Eliminate or limit the use of a garbage disposal.

Properly dispose of coffee grounds and food.

Put grease in a container, let harden, and discard in the trash.

Dispose of non-degradable products or chemicals in the trash can.

Consult a septic service professional to advise proper distance for planting trees/shrubs

### DON'T:

Don't drive or park on your drainfield.

Don't plant trees or shrubs too close to your drainfield.

Don't concentrate all of your water uses at the same time.

Try to spread out your use of toilets, dishwasher, washing machine, shower, etc...



# Lake Delhi Shirt/Apparel Order Form

All Proceeds Go to: The Community Fund to Rebuild Lake Delhi



Item	Color	Price	Size	Order Qty	Ext \$ Amount
Lake Delhi Hooded Sweatshirt ( <i>with zipper</i> )		\$30			
Lake Delhi Hooded Sweatshirt 2XL+ ( <i>with zipper</i> )		\$35			
Lake Delhi Regular Sweatshirt		\$20			
Lake Delhi Regular Sweatshirt 2XL+		\$25			
Lake Delhi Ladies White T-Shirt	White	\$15			
Lake Delhi Ladies Heather T-Shirt	Heather	\$15			
<i>I Gave a DAM</i> T-Shirt or <i>Dam-Just Build It</i> T-Shirt – White	White	\$15			
<i>I Gave a DAM</i> T-Shirt or <i>Dam-Just Build It</i> T-Shirt – Gray	Gray	\$15			
Lake Delhi Polo Shirt – Ladies Style	Yellow	\$30			
Lake Delhi Polo Shirt – Reg Style	Navy	\$30			
Lake Delhi Fleece Jacket	Black	\$40			
Lake Delhi Cap	Gold/Black	\$15			
Lake Delhi Cap	Navy/White	\$15			
Lake Delhi Cap	Royal Blue	\$15			
Lake Delhi <i>Visor</i>		\$10			
				<b>Total \$:</b>	

Name: \_\_\_\_\_

**Mail Form and Check Payment to:**

**Community Fund to Rebuild Lake Delhi  
712A Third St.  
Delhi, IA 52223**

If you have any questions, please contact Laurie Kramer at (563) 920-9863 or Todd Gifford at 319-651-6688