

Lots of Progress

In This Issue:

- Dam Construction Update
- Your Input to Important Survey Questions
- DNR Fisheries Plan to Restock Lake Delhi!
- Trustee Election Results
- DNR Shoreline Improvement information
- DNR Dock Permit information
- Where In the World Is It? CONTEST
- Lake Bed Tree Mitigation Information
- Aquatic Invasive Species Information from DNR
- Lake Water Level when-Lake-is-restored Information
- 9/26/14 Governor Branstad visit to Lake Delhi
- And More!

Dam Construction Update

Phase 1 was awarded to Lunda Construction Company in April 2014. An important goal of Phase 1 work is to complete enough refurbishing work on the existing concrete structure to allow river water flow to be diverted from the current river bed through the concrete structure. At the Trustees meeting, approval for going out for bids for Phase 2 work was made. Evaluation of overall project schedule is now complete enough to proceed to bidding. Our plan now is to award the Phase 2 work in October 2014.

Project completion date is dependent on many factors such as the river flow being average, minimal adverse weather events in the next 9 months, selecting a quality contractor for Phase 2 and finally, that the river flow at the time needed to refill the lake is sufficiently greater than the minimum flow that we must pass. Further, consideration must be given to all lake bed issues needed prior to refilling and the startup procedures for the new flood gates as they will be fully loaded for the first time only after the lake is initially filled. For all these reasons, it is not possible to give a firm date for project completion as much as we would like to other than to say conservatively third quarter 2015.

River flows continue to be below normal summer flows creating ideal construction conditions during the last two months.

Specific Progress by Lunda on Phase 1 work through August 27, 2014 includes:

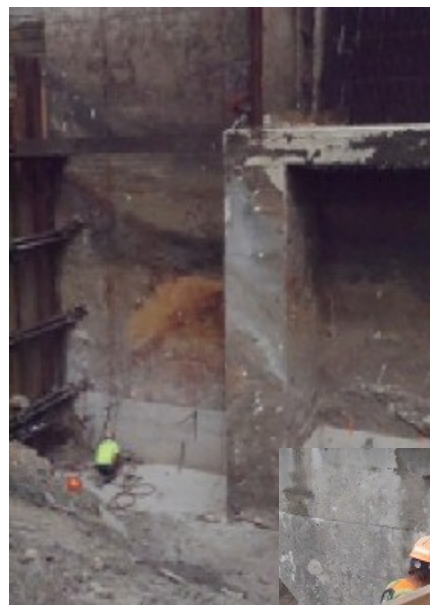
Saw cutting on upstream piers removal is now complete. Demolition of weathered concrete is nearly complete.

Anchor Blocks for Rock Bolts. Preparation of area where concrete anchor blocks will be placed. Worker is testing steel dowel rods drilled into base of existing concrete structure. Each dowel (over 100 dowels when done) must withstand 60,000 pounds of pull strength. A few dowels are tested and then the remainder are installed.

After dowels are installed, area to receive anchor block concrete is filled with steel rebar prior to pouring concrete

Finally, forms are placed and the concrete is poured (as of August 29, 2014). This completes anchor blocks.

Work Progress through August 29, 2014



Continued Page 2

LAKE DELHI VOICE

Newsletter of the Lake Delhi Taxing District and Community—Aug/Sept, 2014 Page 2

The Lake Delhi Combined Recreational Facility and Water Quality District Trustee's:

Steve Leonard: President, Trustee

Larry Burger: VP, Trustee

Mary Kray: Secretary, Trustee

Laurie Kramer: Treasurer, Trustee

Pat Colgan: Trustee

Lamont Davidson: Trustee

Todd Gifford: Trustee

Contact us:

Website:

www.LakeDelhi.org

Email: LakeDelhiTrustees@LakeDelhi.org

Lake Delhi VOICE Editor: Todd Gifford



Dam Construction Update—continued from Page 1



You can see historical and ongoing Dam Construction updates on the Lake Delhi Trustee Website at www.LakeDelhi.org

DNR partners with Lake Delhi to Restock the Lake with Fish!

The Lake District Trustees and our local Fish Club is very appreciative for the continued support and partnership with the Iowa DNR.

In recent conversations, Dan Kirby (Fisheries Biologist) and Mike Steuck (Fisheries Supervisor) from the Iowa Department of Natural Resources have committed to help Lake Delhi to become a great fishing destination once again after the Dam is rebuilt and the Lake is restored.

The plan is to stock roughly 530,000 fish that consist of Largemouth Bass, Bluegill, Black Crappie, and White Bass over the next three years.

In addition, since Walleyes seldom reproduce successfully in the Maquoketa River system, the DNR is intending to stock fingerling walleyes on an annual basis. This includes stockings at areas “in and around” Manchester and Baileys Ford—some of these walleyes take up residence in Lake Delhi as they swim downstream.

DNR Information on Floodplain Improvements to shoreline and Dock Permits

It isn't just trout stocking that is keeping the DNR hopping this summer. The influx of foot traffic from Lake Delhi residents is reminding the DNR staff at the Fish Hatchery that property owners are getting excited about the prospect of a new and improved Lake Delhi!

If you plan on making any **changes or improvements to the shoreline** or within the floodplain, you must file a joint application with the US Army Corps of Engineers and the Iowa DNR (Floodplains and Sovereign Lands) and wait until the permits are issued. You can find the Shoreline Change/Improvement application at: <http://www.iowadnr.gov/Portals/idnr/uploads/forms/form36.pdf>. Addresses and telephone numbers are provided on page 6 of the application. Remember to take your approved *continued Page 3*

LAKE DELHI VOICE

Newsletter of the Lake Delhi Taxing District and Community—Aug/Sept, 2014 Page 3

USACE and DNR permits to the County Engineer to receive a permit from Delaware County prior to construction.

You may apply for **dock permits** starting on December 1, 2014 and throughout the winter. You may go online to file your dock permit application at: <https://www.iowadnr.gov/boatdocks>.

As you complete your spring and summer projects, you may want to make sure your dock is in compliance for next year. You will need to remove any hard roofs. You may use the wood frame from your current roof structure; however, all metal sheeting and/or plywood sheeting must be removed. Only the 2x4 framework with stringers can remain to secure a soft plastic or tarp roof over the hoist. It is the property owner's responsibility to make sure docks are securely anchored to the shoreline to prevent them from becoming floating hazards during times of high river flows. The riparian owner is responsible for dock retrieval and removal when necessary.

Docks must have a minimum ten foot gap (open space) between structures. This ten foot gap is required between you and the neighbors, as well as between separate structures you may have off your property. Five foot offsets are required between your structure and the projection of the property line unless you obtain permission from the adjoining property owner and an exception through the permitting process. Gaps between structures allow for shoreline angling as well as offering swimmers, downed skiers and boaters in distress safe passage to shore.

Blocked shorelines can be a safety hazard for other water users. These gaps must remain open and not be blocked by moored boats or other objects. If you have electric service on your dock, it shall include ground fault circuit interrupter protection.

If you have questions about the dock rules, you may contact the Iowa DNR at 563-927-3276 or you can review the dock rules at: <https://www.legis.iowa.gov/docs/ACO/chapter/571.16.pdf>.

Trustee Election Results for 3 Seats on Lake Delhi Trustee Board

The Delaware County Auditor's Office conducted The Lake Delhi Combined Recreational and Water Quality District Trustees Election for 3 of the 7 Board Member positions on Tuesday, July 22, 2014. The 3 people elected or re-elected as Trustees are:

Steve Leonard

Laurie Kramer

Pat Colgan

Thank you to all who voted in the election.

Lake Bed Tree Mitigation Information

As we approach getting the Lake restored, we have to ensure that the lake bed is ready to receive water and that we have trees and problem vegetation cleaned and cleared so that we don't have safety and navigation issues.

To that end, we need a complete team effort among property owners, friends of the lake, and lake leadership. Last Summer and Fall, many property owners (some prior to that) began mowing and cutting down vegetation out in the lake bed in front of their properties, which is excellent. With respect to trees, we have researched this and consulted with experts at Iowa State University and have found that simply cutting trees down close to the ground and then lake water covering them by more than approximately 12 inches will prevent future growth of those trees when the lake is restored.

We need everyone to begin or continue cutting tree growth and vegetation down on their lake bed properties in preparation for lake water. If you feel that you are not able to get the trees/heavy brush cut down, please contact Todd Gifford at 319-651-6688 or LakeDelhiTrustees@LakeDelhi.org (Subject: Attn Todd Gifford / Lake Bed Tree Mitigation). We do have a central team lead by Todd that is assessing problem Tree areas and coordinating solutions to mitigating Trees and heavy brush. Please contact Todd if you know of problem areas and are not sure how they are going to get taken care of.

LAKE DELHI VOICE

Newsletter of the Lake Delhi Taxing District and Community—Aug/Sept, 2014 Page 4

Where In The World Is It? **CONTEST**

Can you guess what this famous place is and win the contest?

The image below is a portion of a very famous place. If you guess who it is correctly and your name is drawn from all the correct responses submitted, you will win a Free Lake Delhi shirt of your choice. To participate in this contest, you will send an email to LakeDelhiTrustees@LakeDelhi.org, use a Subject of “Where In the World Is It Contest”, put your guess in the body of the email, and provide your contact information. Responses are **Due by 9/19/14**. Good Luck!!!

Guess correctly what this famous place is, get your name drawn from all the correct answers submitted, and win a Lake Delhi shirt of your choice!



You can Still Buy a limited edition *Lake Delhi Cookbook!*

Mary Jo McDermott put together a fantastic Lake Delhi cookbook and has sold many copies while raising money that has been donated to the Community Fund to Rebuild Lake Delhi. You can still buy one of these fantastic cookbooks by contacting Mary Jo at Todmarjo@yousq.net or pick one up at Widner Drug in Manchester.

These cookbooks are a limited run edition, so you would be wise to purchase one of these wonderful Lake Delhi limited edition collector's items while there are still some available! And when you do, you contribute money towards the rebuilding of the dam and restoration of Lake Delhi.

Lake Delhi T-Shirts, Golf Shirts, Sweatshirts, and Hats Available for Purchase

Lake Delhi apparel is a great way for you to give a unique and appreciated gift to your family member, friend, or loved one. A large variety of Lake Delhi T-Shirts, Sweatshirts, Polo shirts for men and women, Fleece jackets, and hats are available for purchase in all sizes. All proceeds go to the Community Fund to Rebuild Lake Delhi. See the order form on the last page of the newsletter. Instructions are on the order form, as well as contact information if you have any questions. Wear or Gift Lake Delhi apparel for a great cause!

DVD Copies of “We Will Be Back—The Lake Delhi Story” still available for purchase

Buy a piece of history while they last

If you saw the *We Will Be Back—The Lake Delhi Story* movie in the theater, you know how powerful of a movie it was. You definitely want to have a copy of it to see it again. If you did not see it in the theater or on PBS TV after the initial showings, you need to get a copy to see it. DVD copies are still available, and with the reconstruction beginning, people will be more interested than ever to learn of the past Lake Delhi. Remember, when Lake Delhi is back and friends and family are visiting, you will want to have this DVD Movie for them to watch and see our story. Also, what a great gift to give them to take with them after a wonderful experience at Lake Delhi. You can purchase your DVD's online at: www.LakeDelhiWeWillBeBack.com, or in person at Widner Drug Store in Manchester.

Property Owner Input from Recent Survey Questions Was Very Valuable Input for the Recent Trustee Planning Work Session

A few weeks ago, the Trustees sent out a brief survey to our email list, asking for your feedback and input on 2 questions:

1. What do you think the most important issues are right now for Lake Delhi to focus on?
 2. Do you or anyone you know have some expertise you would be willing to provide on any of these critical focus areas?
- Continued next page*

LAKE DELHI VOICE

Newsletter of the Lake Delhi Taxing District and Community—Aug/Sept, 2014 Page 5

Thank You for all the valuable feedback we received from that Survey. We had numerous responses. The Trustees compiled all the feedback, brought that to our recent Planning Work session, and developed the list of highest priorities based on this information. Of the feedback we received, the highest priority areas for focus were: Dredging plan, Lake Bed preparation, Dam restoration and operations, Water Quality, Lake Amenities, and Communication. Shortly, we will publish the Trustees' 2014-2015 Plan/Project Priorities with all the details.

Aquatic Invasive Species and Lake Delhi—Information from the DNR

It's a beautiful day with excitement filling the air as folks watch water levels rise on the Hartwick Impoundment witnessing the return of the long awaited "Lake Delhi". Soon boating activity will return on the lake and there are numerous issues that recreationists should be reminded of when out enjoying their activities on the water. Obviously the most important of these issues should be safety first but there are other things boaters need to be aware of, especially when transporting vessels to and from one body of water to another.

In 1996 the Iowa Department of Natural Resources formed a team to address aquatic invasive species that had really begun to show up in many of our Iowa lakes. As many folks remember before the lake had breached in 2010, there was a good abundance of the invasive species of Zebra Mussels that existed throughout the lake. This is just one example of many that have infested Iowa waters throughout the state. There have been many improved watershed practices that have been implemented within the Lake Delhi watershed and with this comes improved water quality. Because of improved water quality and high nutrient delivery in our waters, there comes the potential for high aquatic plant growth in the newly filled lake.

Some of Iowa's invasive species to be aware of and on the look-out for in the newly filled lake are: Zebra Mussels (once present in Lake Delhi), Eurasian Watermilfoil, Brittle Naiad and Curlyleaf Pondweed. Below are detailed fact sheets listed for each of these aquatic invasive species and the steps you can take to minimize and slow their spread. For additional information on each of these invasive species one can visit our DNR Website link at: <http://www.iowadnr.gov/Fishing/AboutFishinginIowa/FightingInvasiveSpecies.aspx>

While out enjoying a leisurely cruise on any type of vessel on the newly filled lake, be sure to not only be safe but also be aware of any potential invasive species that may be joining you on Lake Delhi. There are many experts in identification of these invasive species located right here in Delaware Co. at the Manchester Fish Hatchery. The best thing to do is take some good photos of the species observed and e-mail the photos to us here at the Manchester Fish Hatchery or call us at 563-927-3276. Have a wonderful and safe boating season upon the return of the newly filled "Lake Delhi"!

What Will the Lake Level Be When the Lake is Restored with the New Dam/Spillway?

The simple answer is: "the same as it was before the dam breached". You don't need to read any further if that is what you wanted to know. For those that want to know more detail, continue reading:

More information is found in the Lake Delhi Dam Operating Manual report (you can find this on the Lake Delhi Trustee website www.LakeDelhi.org in the Reference Documents area) which is 30 plus pages, and it says that the normal pool is 896.2' (above sea level) at the dam but goes up to 896.6' at the upper reaches of the reservoir. We refer to Lake Delhi as a "lake" but technically it is a *reservoir with a dam on a river that is nine miles long*. Lake surfaces are flat but river reservoirs, such as ours, are not necessarily so. The river has a slope essentially causing water to flow downhill. When we talk normal lake level we are referring to lake level at the dam of 896.2. But technically everyone up river depending on where you are located, normal lake level is very slightly higher, thus the range from 896.2' to 896.6' for normal lake level. That the new lake level will be the same as the former lake level is the key point so you can plan your docks, lifts and shoreline protection accordingly.

Governor Terry Branstad to Visit Lake Delhi on September 26th

There will be a fundraiser event held for Lee Hein on September 26th at Lake Delhi. Governor Branstad will be in attendance, along with other State and County leaders. He will tour Lake Delhi, have dinner with Lake Delhi fundraiser attendees, and speak. Look for a flyer coming out shortly of the event with details. Dinner Event will start at 5 pm on 9/26. Details coming.

Lake Delhi Shirt/Apparel Order Form

All Proceeds Go to: The Community Fund to Rebuild Lake Delhi



Item	Color	Price	Size	Order Qty	Ext \$ Amount
Lake Delhi Hooded Sweatshirt (<i>with zipper</i>)		\$30			
Lake Delhi Hooded Sweatshirt 2XL+ (<i>with zipper</i>)		\$35			
Lake Delhi Regular Sweatshirt		\$20			
Lake Delhi Regular Sweatshirt 2XL+		\$25			
Lake Delhi Ladies White T-Shirt	White	\$15			
Lake Delhi Ladies Heather T-Shirt	Heather	\$15			
<i>I Gave a DAM T-Shirt or Dam-Just Build It T-Shirt – White</i>	White	\$15			
<i>I Gave a DAM T-Shirt or Dam-Just Build It T-Shirt – Gray</i>	Gray	\$15			
Lake Delhi Polo Shirt – Ladies Style	Yellow	\$30			
Lake Delhi Polo Shirt – Reg Style	Navy	\$30			
Lake Delhi Fleece Jacket	Black	\$40			
Lake Delhi Cap	Gold/Black	\$15			
Lake Delhi Cap	Navy/White	\$15			
Lake Delhi Cap	Royal Blue	\$15			
Lake Delhi <i>Visor</i>		\$10			
				Total \$:	

Name: _____

Mail Form and Check Payment to:
Community Fund to Rebuild Lake Delhi
712A Third St.
Delhi, IA 52223

If you have any questions, please contact Laurie Kramer at (563) 920-9863 or Todd Gifford at 319-651-6688